

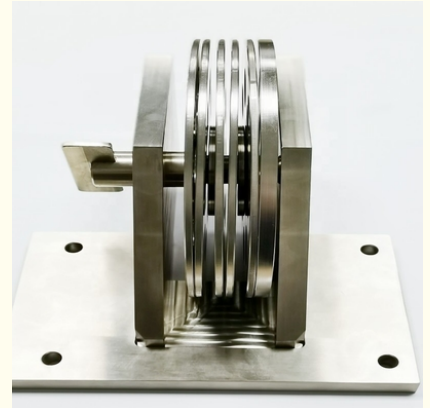
High Precision Stainless Steel CNC Machined Parts Custom Turning Assembled

Our Product Introduction

for more products please visit us on cncmachinesparts.com

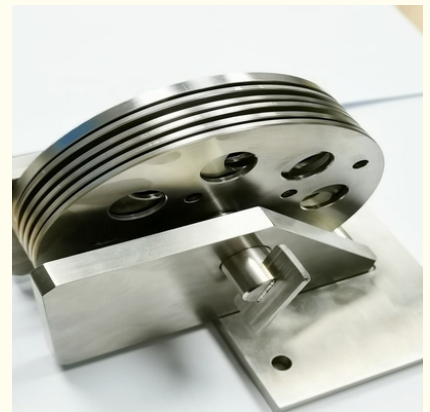
Basic Information

- Place of Origin: Guangdong, China
- Brand Name: OEM ODM
- Certification: ISO9001, IATF16949, ISO14001
- Minimum Order Quantity: 1pcs
- Price: Negotiable
- Packaging Details: As the requirement of customer
- Delivery Time: 7-30days
- Payment Terms: L/C, D/A, D/P, T/T, Western Union, MoneyGram
- Supply Ability: 10000000pcs/month

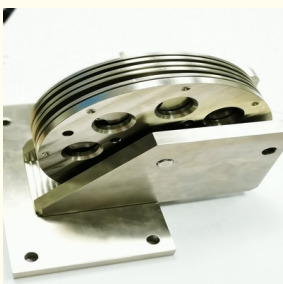


Product Specification

- Key Words: CNC Turning Service For Automation
- Device: CNC Machining Center
- Surface Treatment: Anodizing, Smooth, Painting
- Dimension: Customized Per Drawing
- Item: Stainless Steel Parts
- Package: Standard Export Package
- Process: CNC Turning And Milling
- Highlight: **Turning Assembled Stainless Steel CNC Parts, High Precision CNC Machined Parts, Stainless Steel CNC Machined Parts**



More Images



High Precision Stainless Steel CNC Machined Parts Custom Turning Assembled

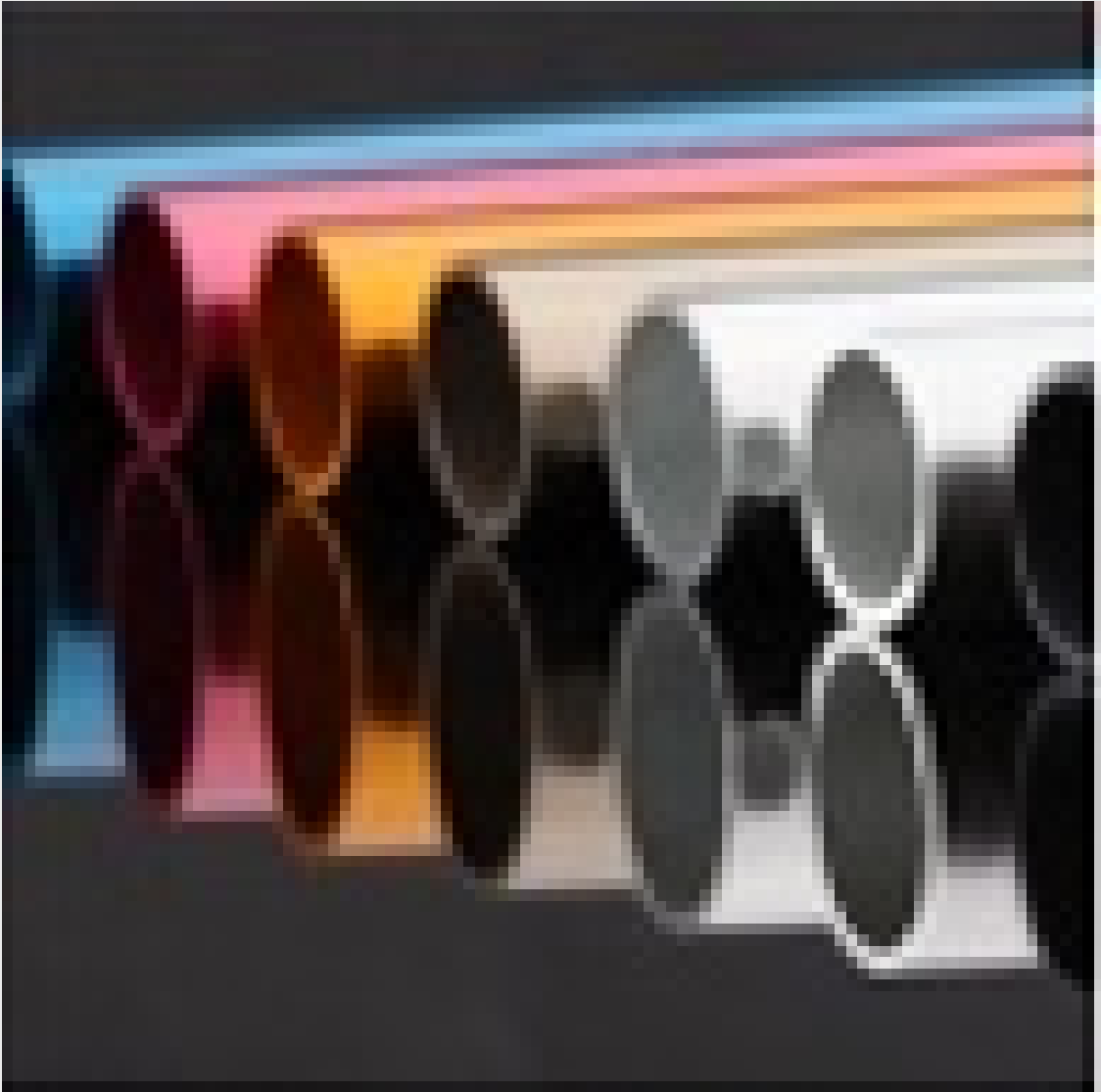
Product Specifications

Key words	CNC Turning Service For Automation
Device	CNC machining center
Surface treatment	Anodizing, Smooth, Painting
Dimension	Customized per Drawing
Item	Stainless Steel parts
Package	Standard Export Package
Process	CNC Turning and Milling

About Our CNC Machining Services

Sinbo Precision Mechanical Co. Ltd. specializes in high-precision CNC machining of stainless steel components since 2013. Located in Dongguan, China, we manufacture corrosion-resistant stainless steel parts including plugs, bushes, nipples, cap screws, bulkheads, manifolds, and hydraulic fittings from materials like Stainless Steel 303/304/316.

Professional Finishing Services

**Anodizing**

Materials: Aluminum, titanium

Enhances corrosion resistance, surface hardness, and heat dissipation. Available in Type 2 (color tinting) and Type 3 (extra-hard surfaces).



Painting

Materials: Plastic or metal

Soft-touch paint coatings provide matte finishes that reduce glare, hide fingerprints, and offer non-slip textures.



Color Matching

Materials: Plastic or metal

Precise color matching using spectrophotometers to ensure accurate Pantone or RGB color application per specifications.



Brand/Logo Processing

Materials: Plastic or metal

Multiple marking options including pad printing, silk screening, laser marking, and CNC machined logos with clear depth.



Sanding and Polishing

Materials: Plastic or metal

Surface refinement for reduced roughness, painting preparation, or creating specific aesthetic finishes.



Blasting

Materials: Aluminum, titanium, steel

Abrasive media treatment for cleaning, de-burring, and creating unique surface textures like frosting or pebbling.



Brushing

Materials: All metals

Creates brushed and satin finishes on metal surfaces for both functional and aesthetic purposes.

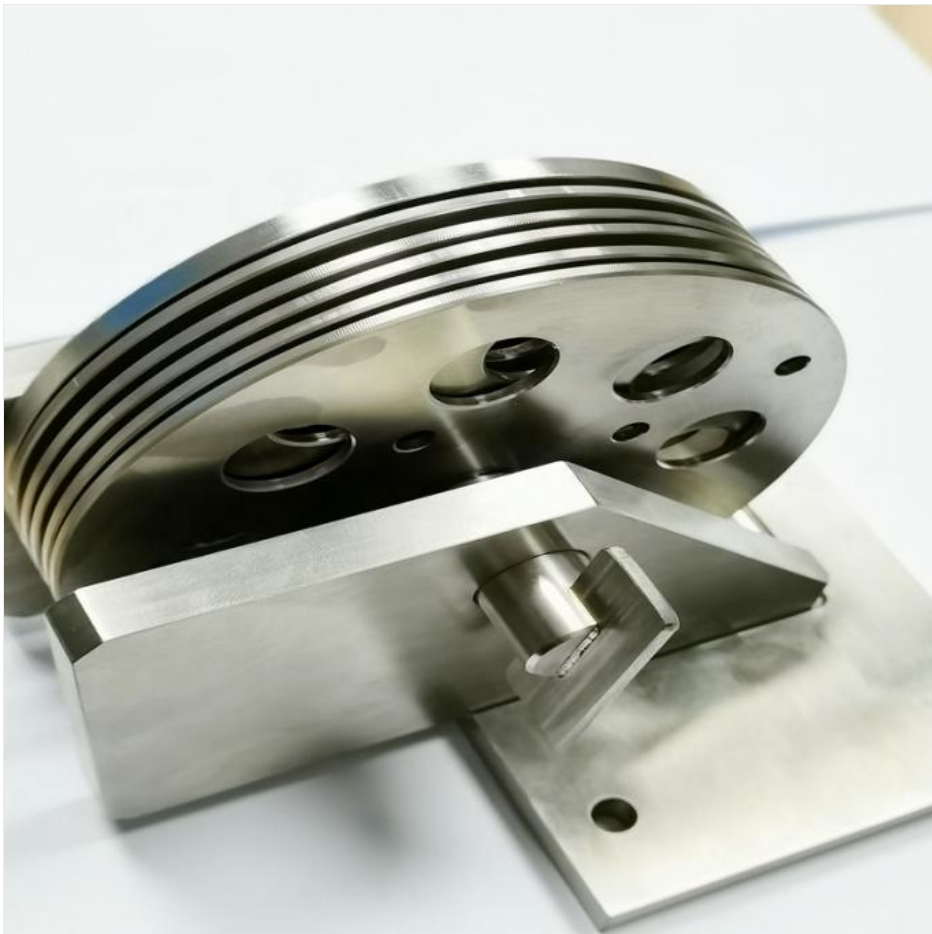


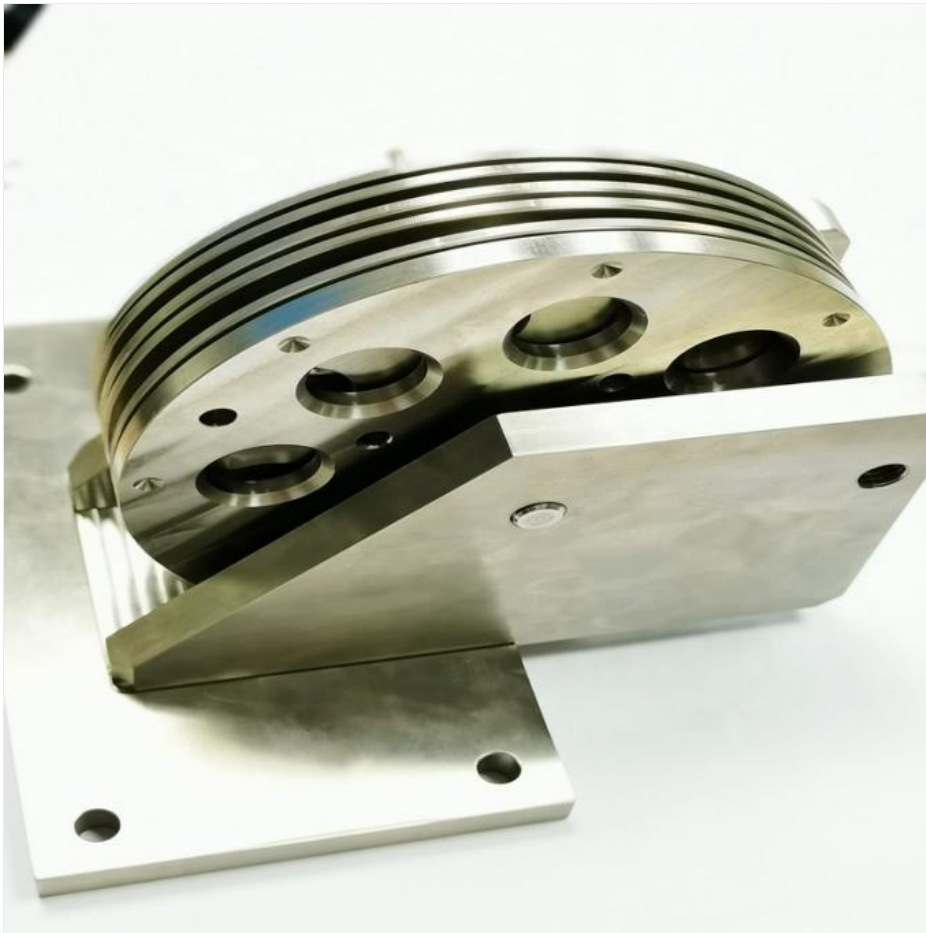
Powder Coating

Materials: All metals

Durable, baked-on paint finish offering superior wear and corrosion resistance with extensive color options.

Product Showcase





Frequently Asked Questions

How can I get a quote?

Provide detailed drawings (PDF/STEP/IGS/DWG) with material, quantity, and surface treatment specifications.

Can I get a quote without drawings?

Yes, we can quote based on samples, photographs, or drafts with complete dimensions.

Will my drawings be kept confidential?

Absolutely. We strictly protect customer designs and can sign NDAs when required.

Do you provide samples before mass production?

Yes, sample production is available (with fee) which may be credited against future orders.

What is your typical lead time?

Samples: 1-2 weeks; Mass production: 3-4 weeks.

How do you ensure quality control?

Our 4-stage process includes: (1) Material inspection (2) First article inspection (3) Sampling inspection (4) 100% pre-shipment QC check.

What if I receive defective parts?

Send photos/documentation and our engineers will promptly resolve the issue, including remaking parts if necessary.



Sinbo Precision Mechanical Co., Ltd.



+86 18566571980



Amy.ho@jinbo-china.com



cncmachinesparts.com

No.7,Mingzhu 2 road,Shebei,Huangjiang,Dongguan,Guangdong,China 523752

